

Notes:

1. The conservation easements of the Lynde Point Land Trust, Inc. depicted hereon are described in the following deeds recorded in the Town of Old Saybrook land records:

Volume	Page
313	588
313	595
320	245
372	624

The easement areas therein are described generally based on a map entitled:

"Map of New Saybrook No. 2", Scale: 1"=420' approximately, Prepared by: Win. R. Clarke, C.S. and recorded in the Town of Old Saybrook land records as Town Clerk's Map No. 27.

2. The parcel and street lines depicted hereon have been reproduced from the Town of Old Saybrook Assessor's Map numbers 5, 9, 10 and 11. These maps and recent aerial photographs were used as the base information for this map. The intent of this map is to depict the general location of the conservation easements described in the deeds referenced above. These locations are subject to revision as additional records research and accurate field surveys may disclose.
3. The land parcel owned in fee by the Lynde Point Land Trust, Inc. depicted hereon is described in a deed recorded in Volume 372, Page 631 in the Town of Old Saybrook land records.

4. The following is an overview of both the permitted and prohibited uses and activities within the areas under conservation easement:

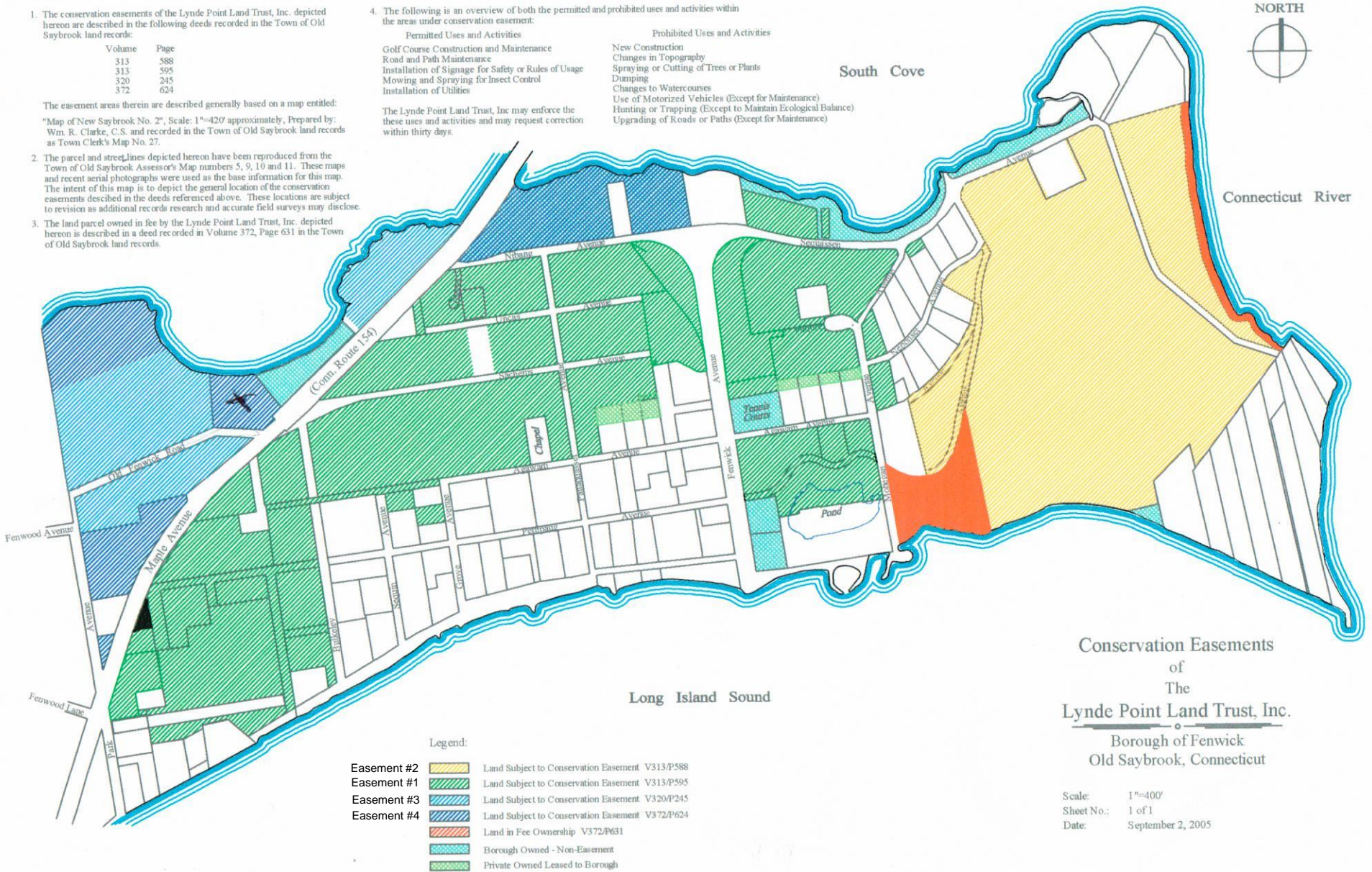
Permitted Uses and Activities

- Golf Course Construction and Maintenance
- Road and Path Maintenance
- Installation of Signage for Safety or Rules of Usage
- Mowing and Spraying for Insect Control
- Installation of Utilities

Prohibited Uses and Activities

- New Construction
- Changes in Topography
- Spraying or Cutting of Trees or Plants
- Dumping
- Changes to Watercourses
- Use of Motorized Vehicles (Except for Maintenance)
- Hunting or Trapping (Except to Maintain Ecological Balance)
- Upgrading of Roads or Paths (Except for Maintenance)

The Lynde Point Land Trust, Inc. may enforce these uses and activities and may request correction within thirty days.



Conservation Easements
of
The
Lynde Point Land Trust, Inc.
Borough of Fenwick
Old Saybrook, Connecticut

Scale: 1"=400'
Sheet No.: 1 of 1
Date: September 2, 2005